

Inequality

A practical approach to consistent comparisons

James K. Galbraith

University of Iceland

June 14, 2016

A brief review of the Theil Statistic:

The “Between-Groups Component”

$$\left\{ \begin{array}{l} T = \sum_{j=1}^m p_j R_j \log R_j + \sum_{j=1}^m p_j R_j T_j \\ \\ T_j = \frac{1}{n_j} \sum_{i \in g_j} r_i \log r_i \end{array} \right.$$

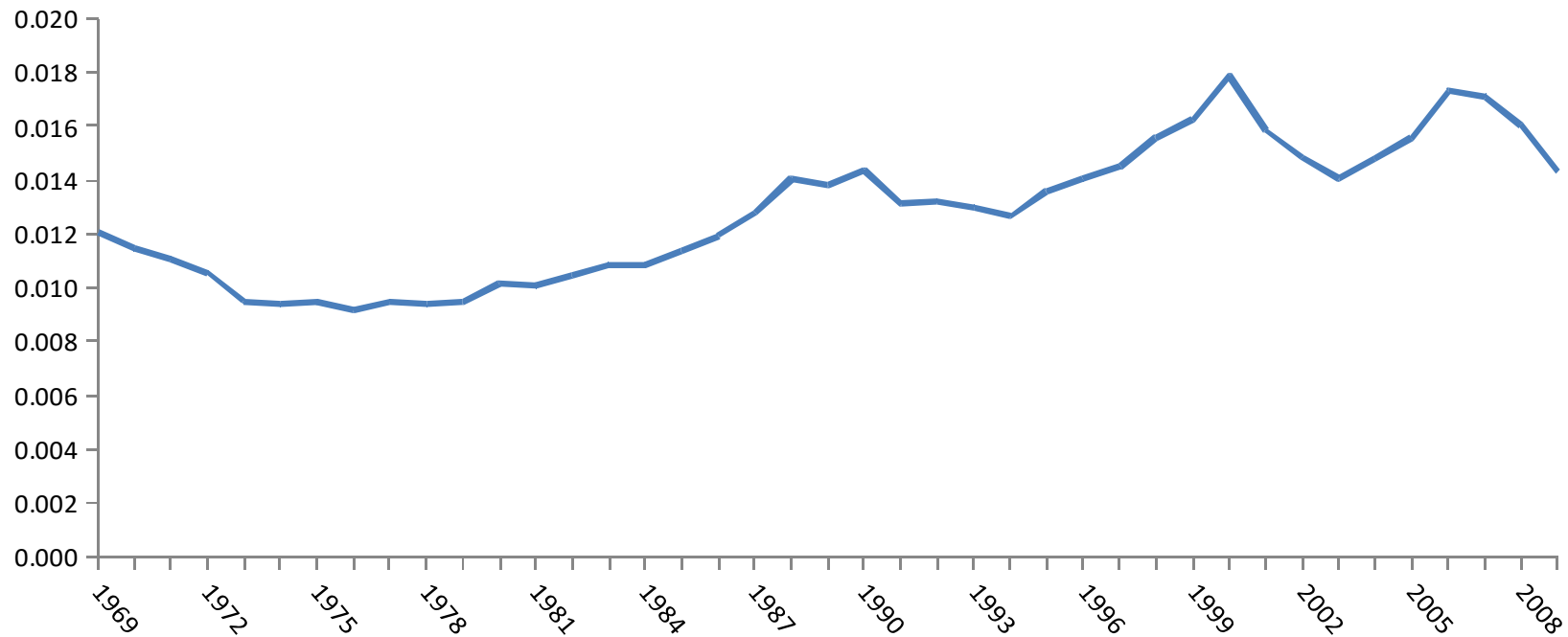
$$p_j = \frac{n_j}{n}$$

$$R_j = \frac{\mu_j}{\mu_Y}$$

$n \sim$ employment; $\mu \sim$ average income; $j \sim$ subscript denoting group

Income Inequality in the United States, 1969-2009

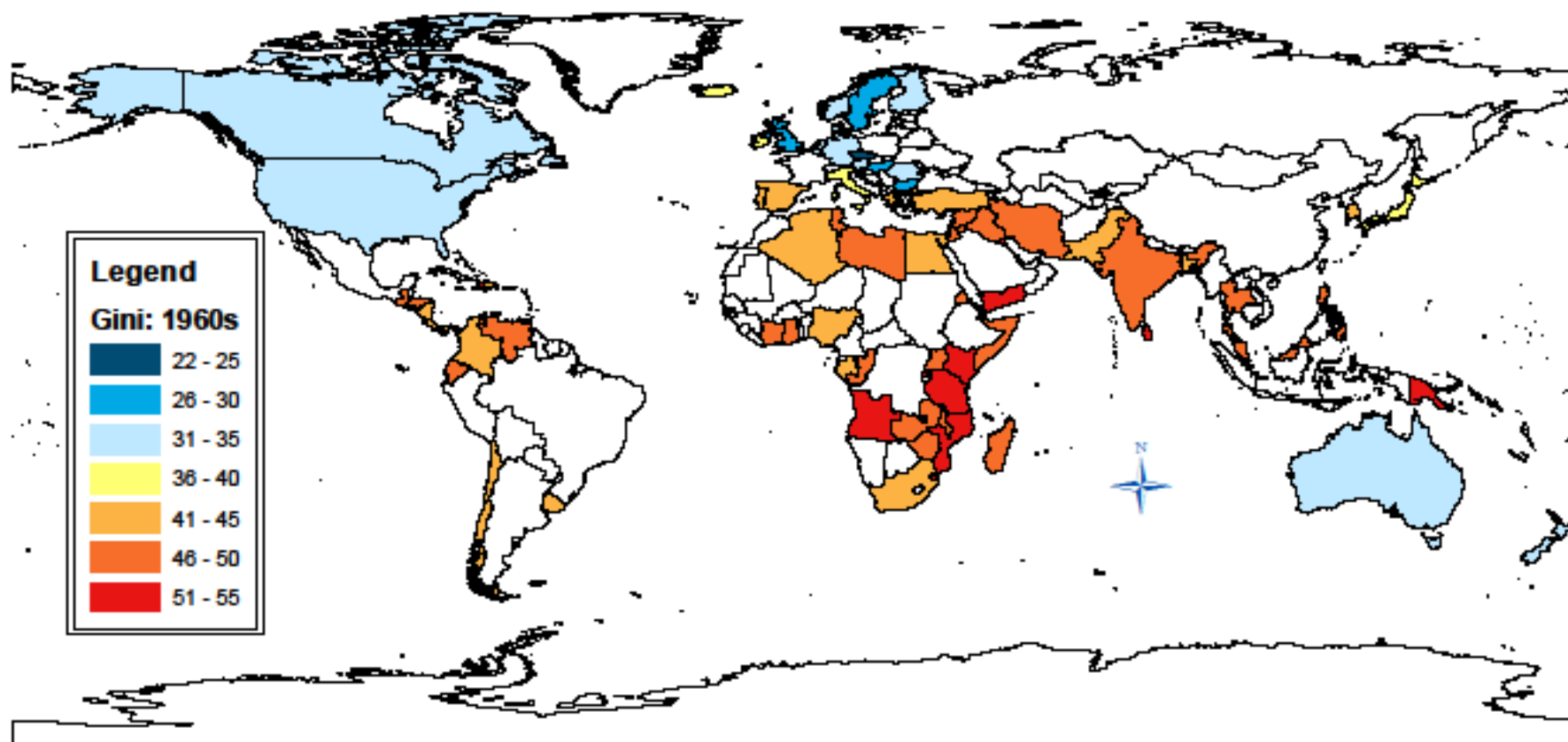
Measured Between Counties: An Update



Calculation by Amin Shams

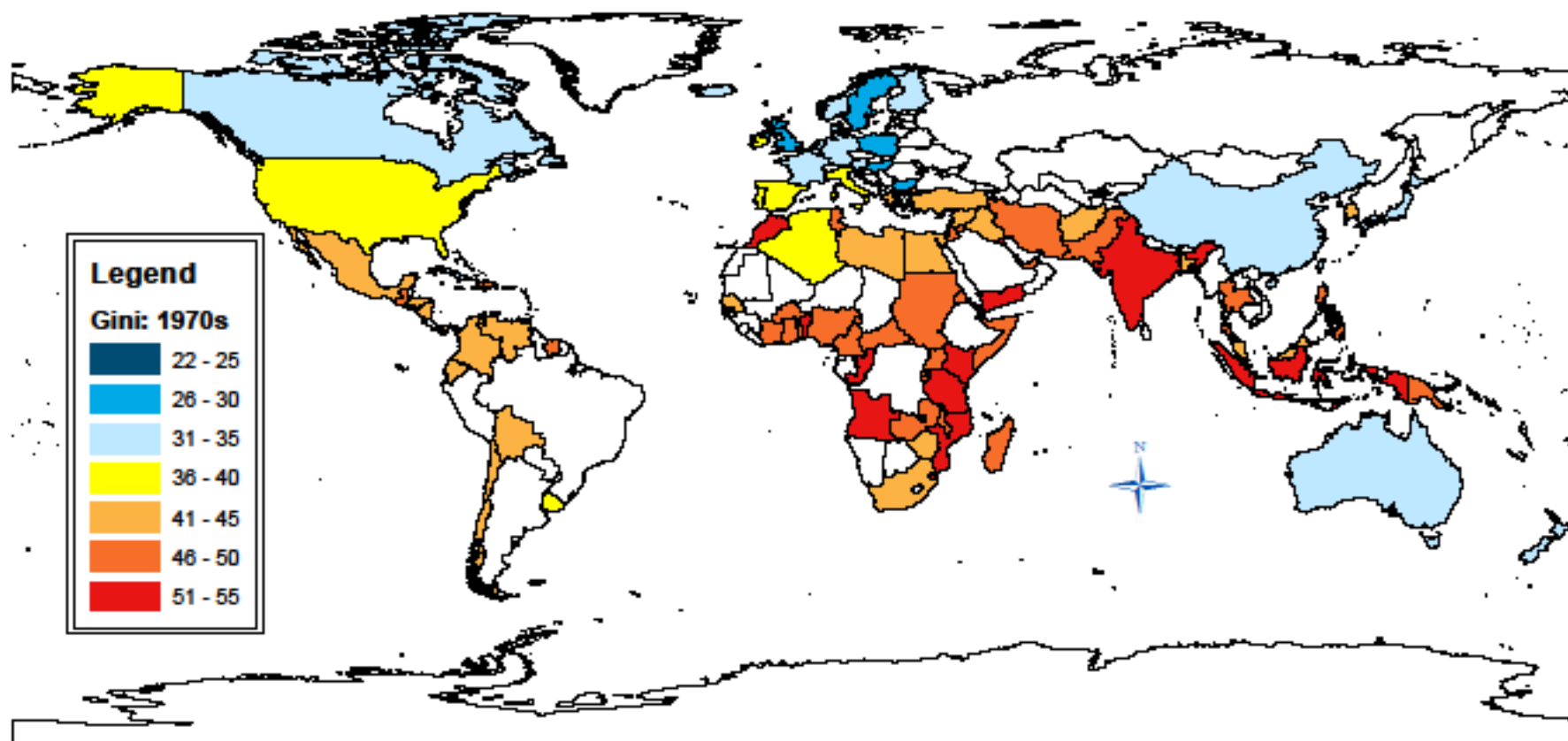
EHII Inequality Data: Gini

1960s

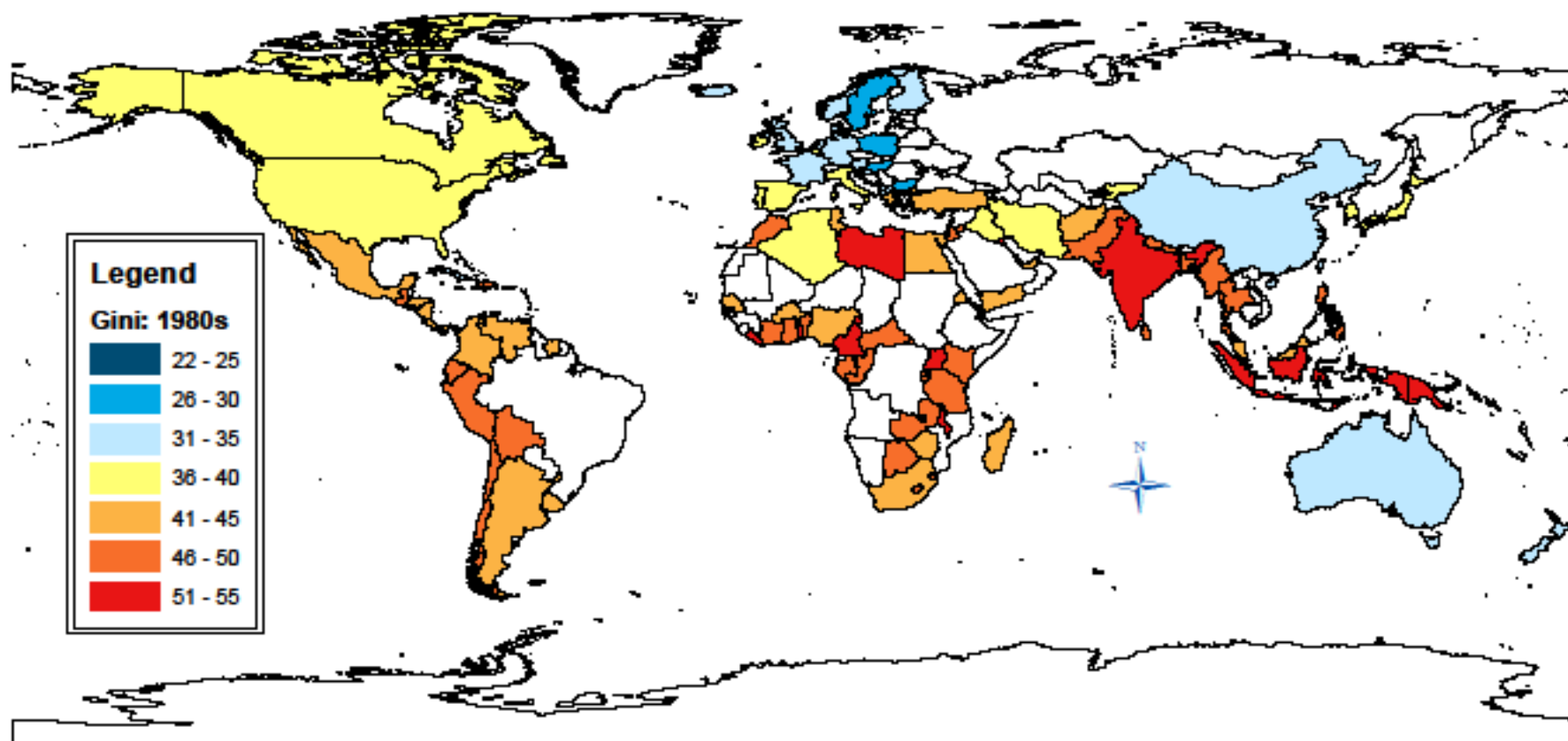


EHII Inequality Data: Gini

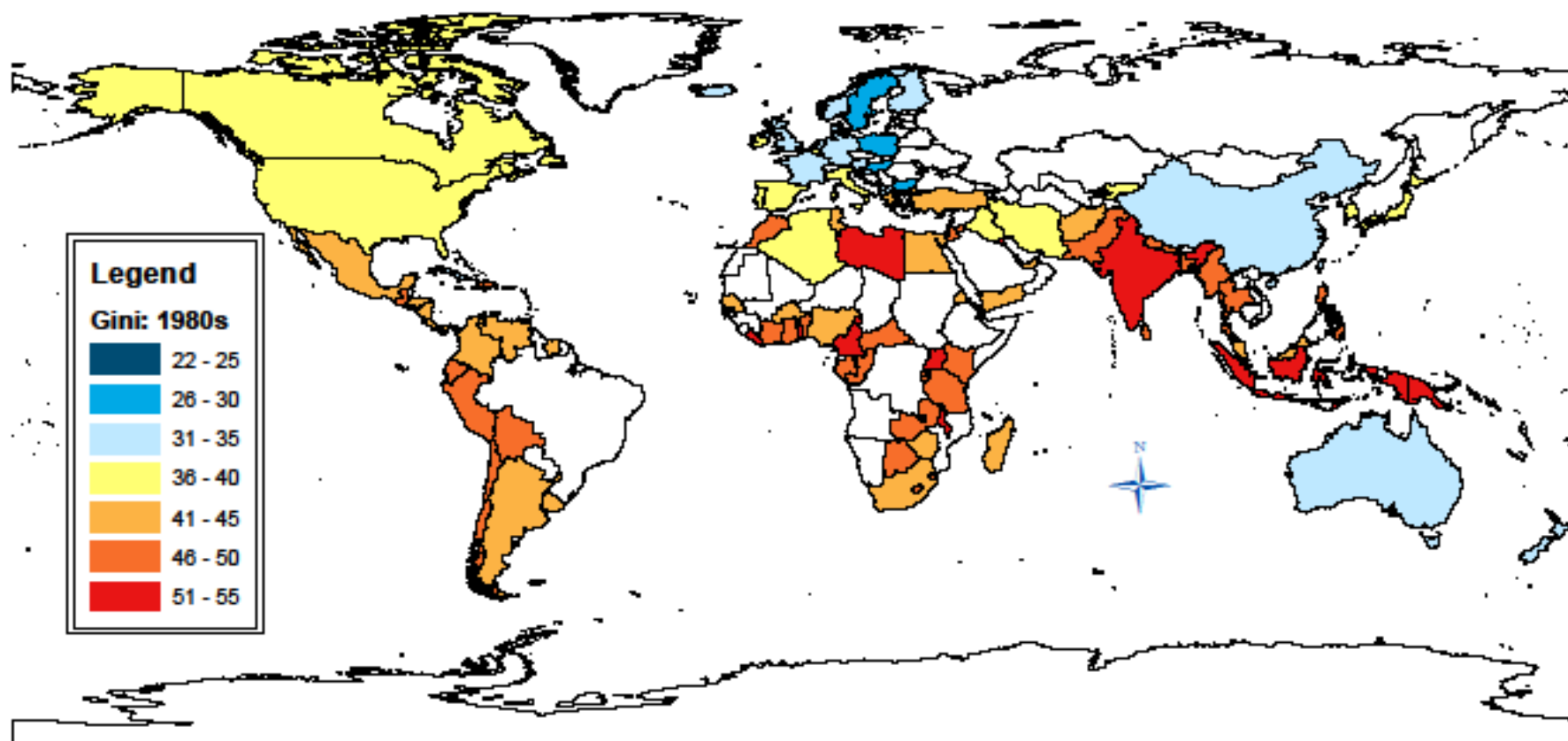
1970s



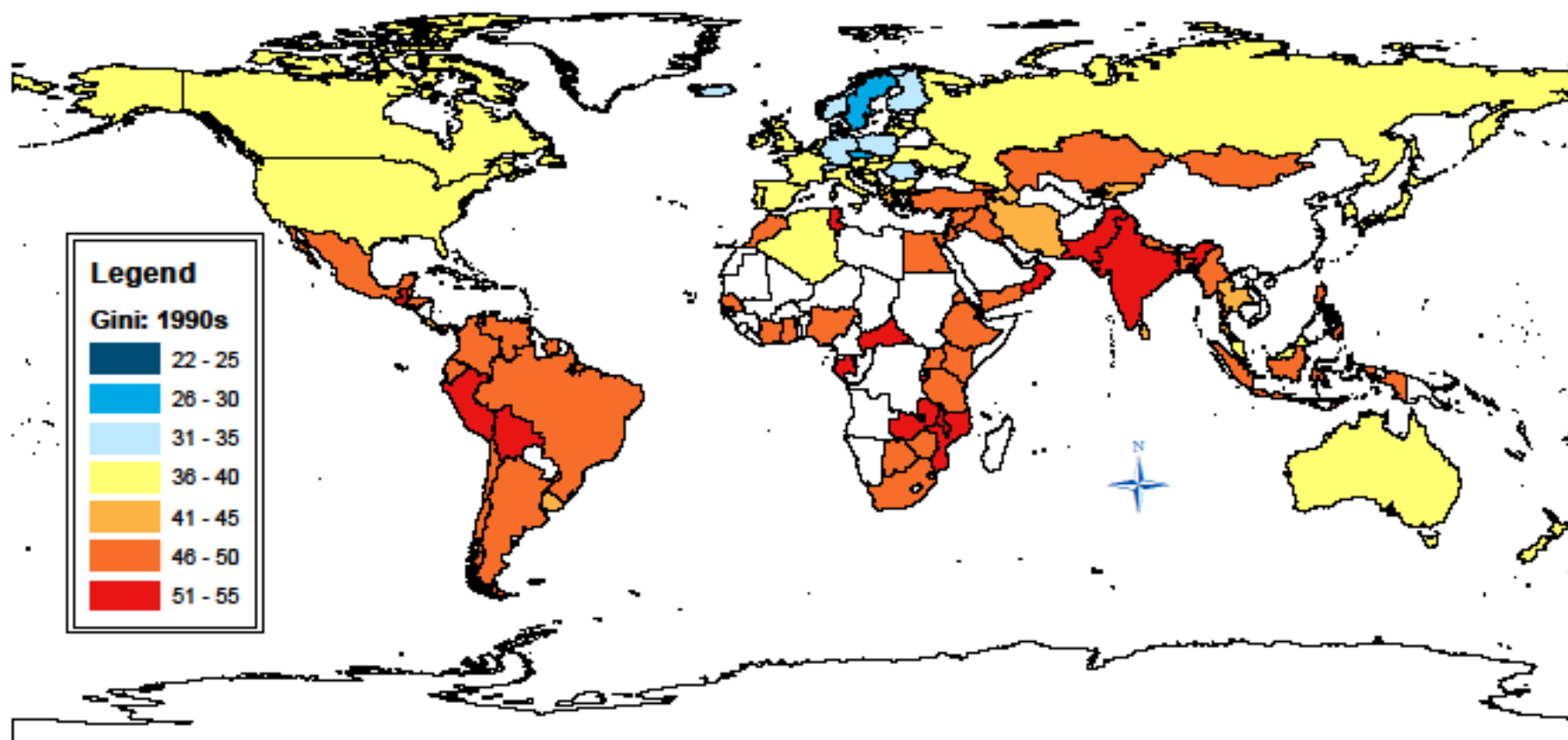
EHII Inequality Data: Gini 1980s



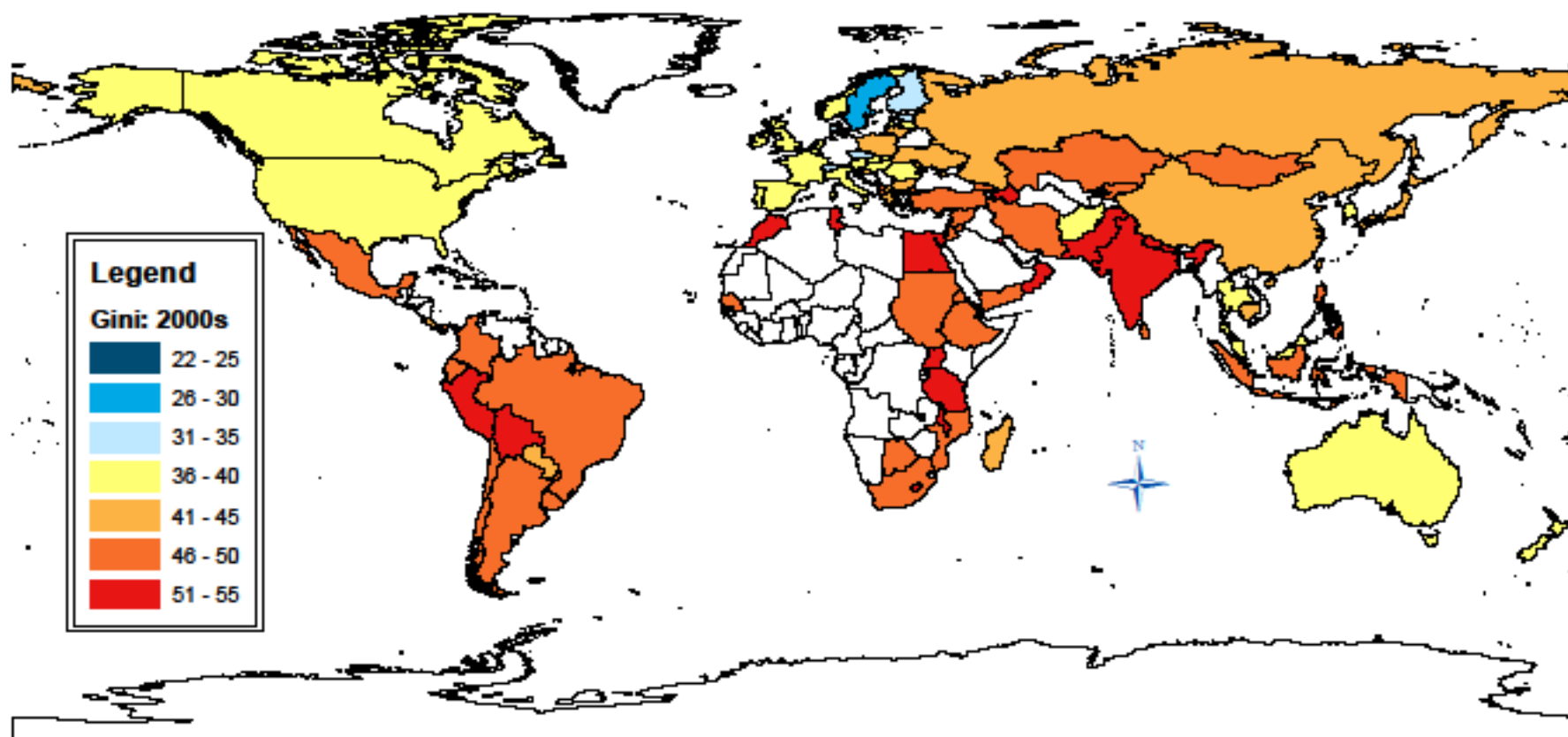
EHII Inequality Data: Gini 1980s



EHII Inequality Data: Gini 1990s

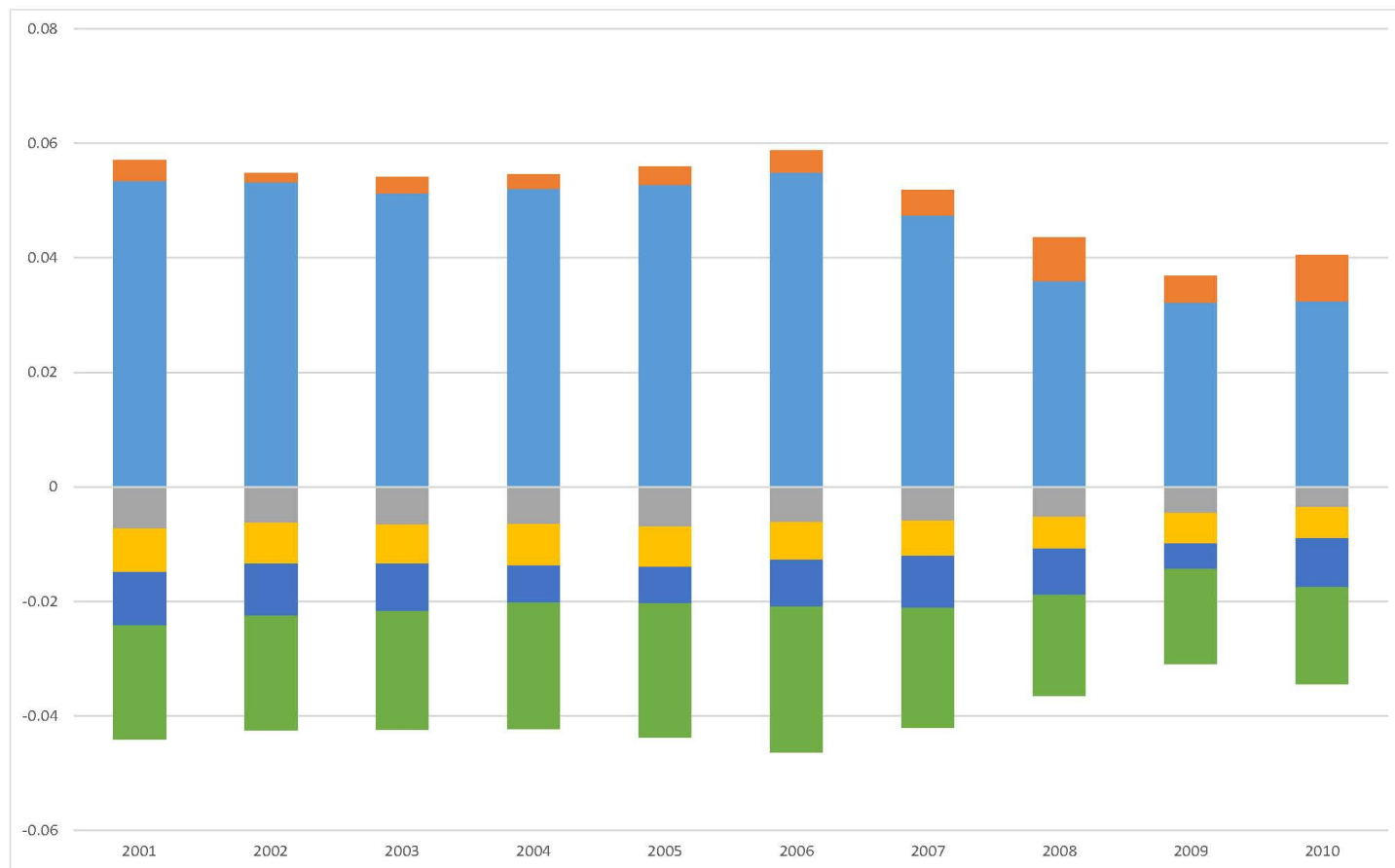


EHII Inequality Data: Gini 2000s



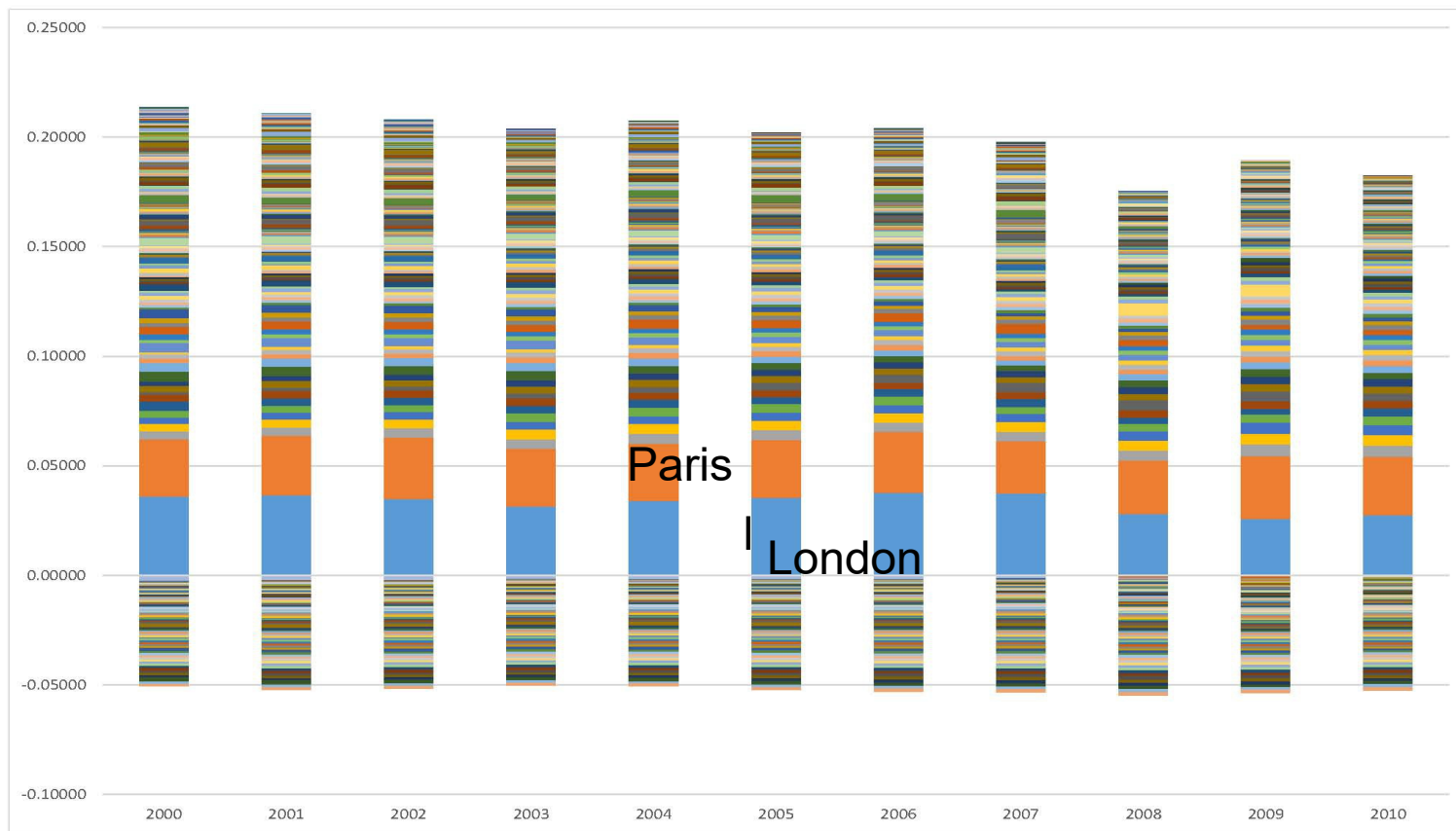
Decomposing Europe by Sector

Blue is for Finance

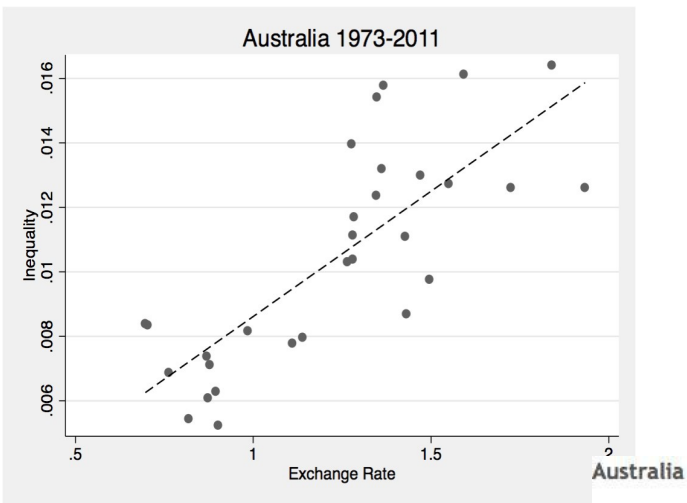


Decomposing Europe by Region

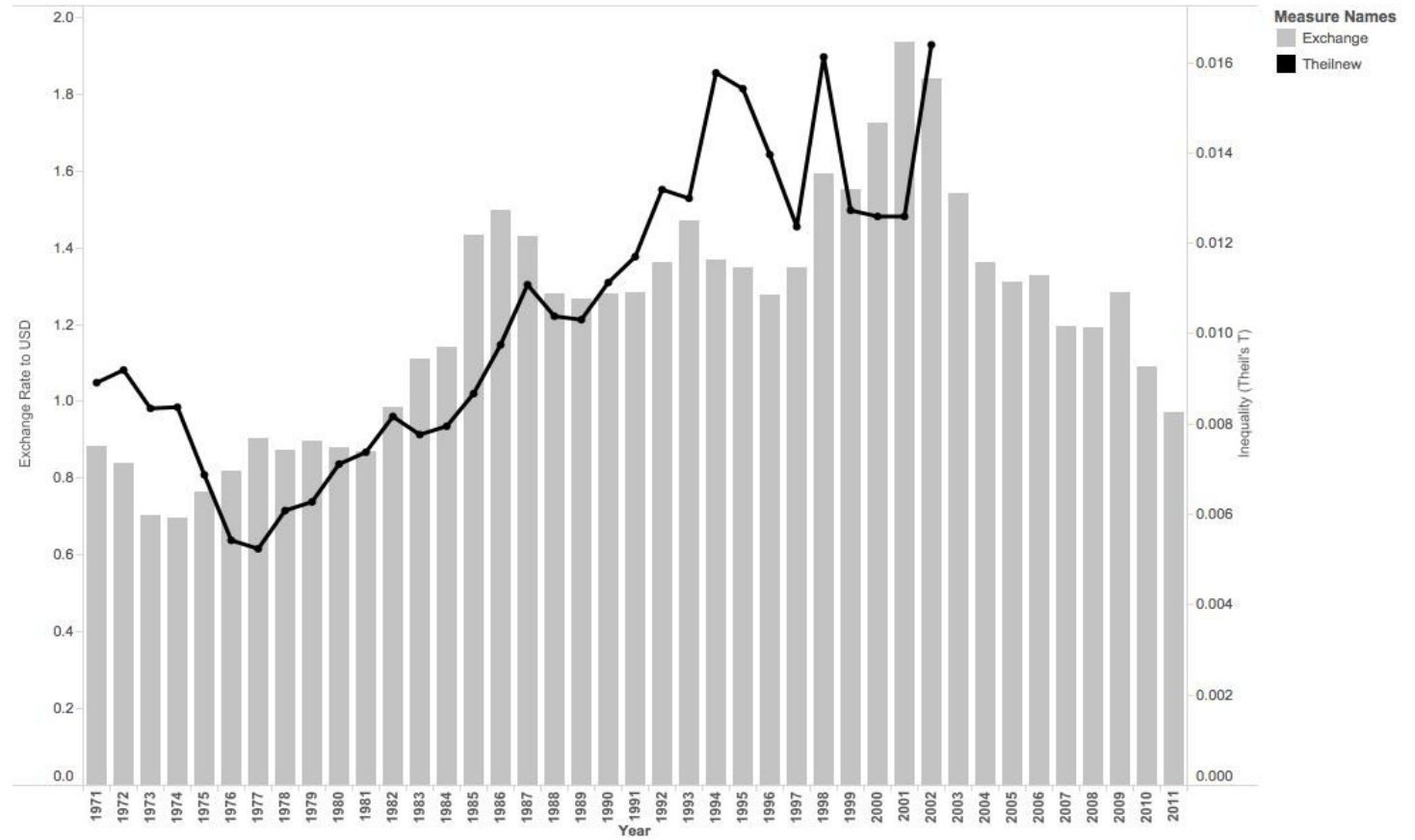
or, Compared to Everything Else, London and Paris are *Really Rich*



Exchange Rates and Industrial Wage Inequality

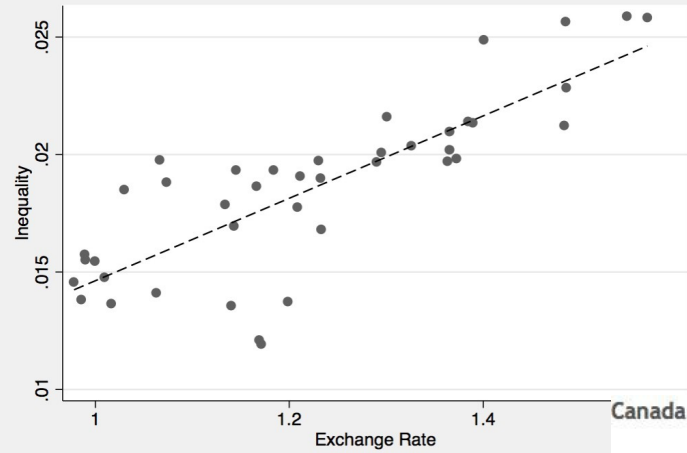


Australia

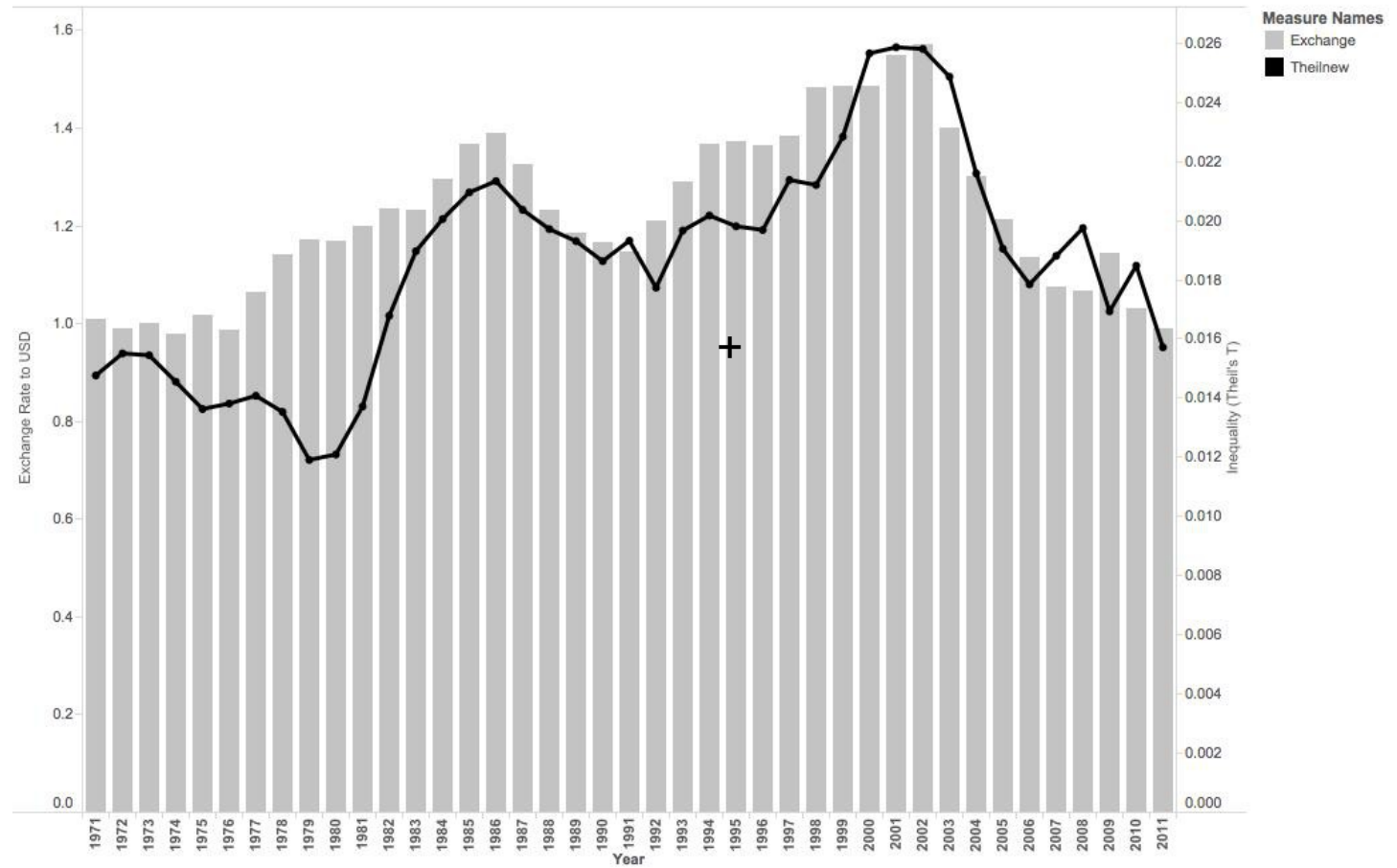


Exchange Rates and Industrial Wage Inequality

Canada 1971-2011

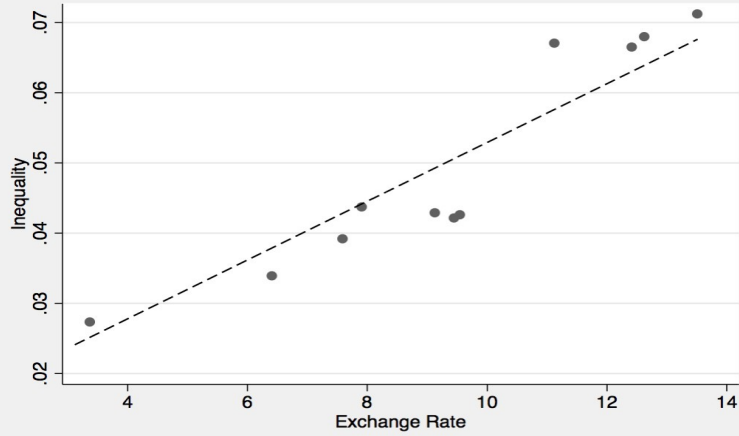


Canada



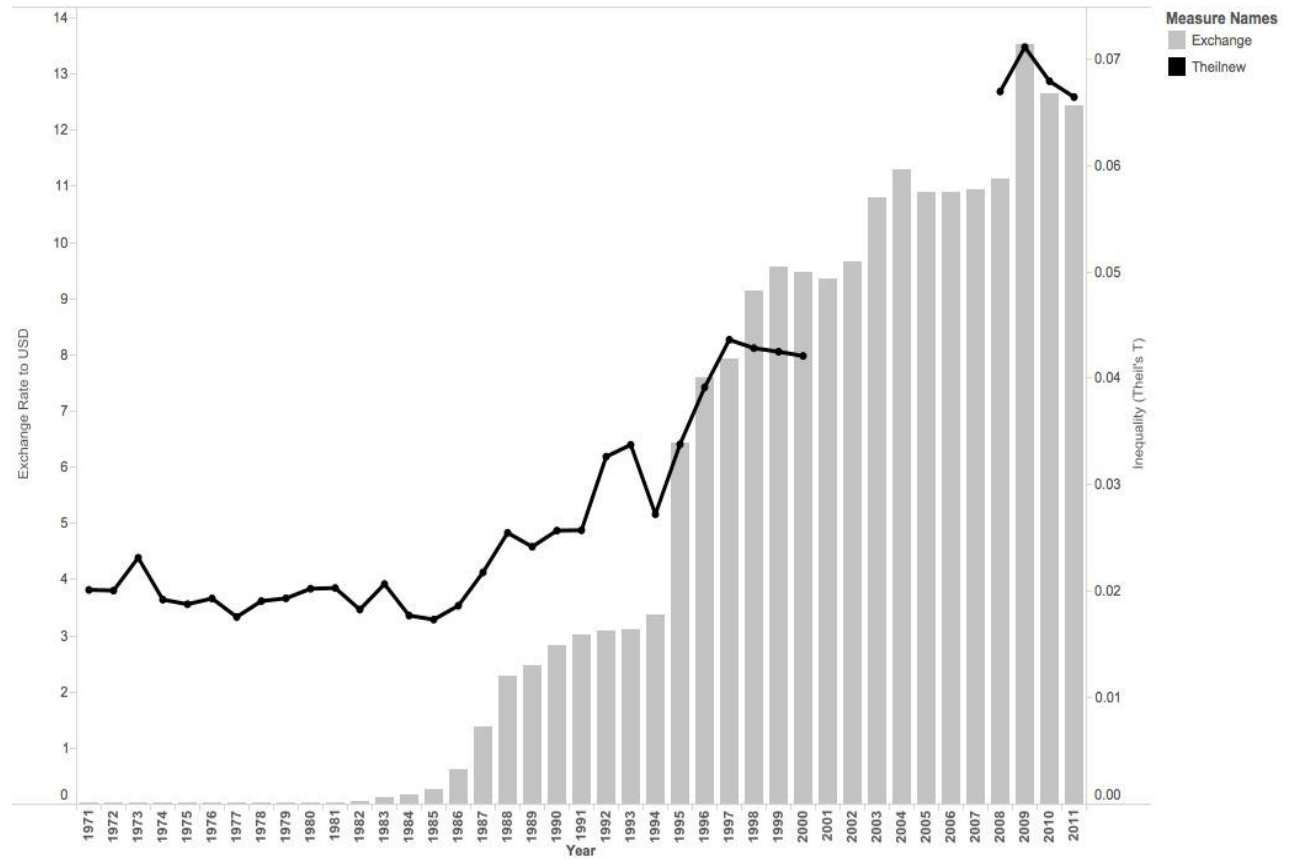
Exchange Rates and Industrial Wage Inequality

Mexico 1994-2011



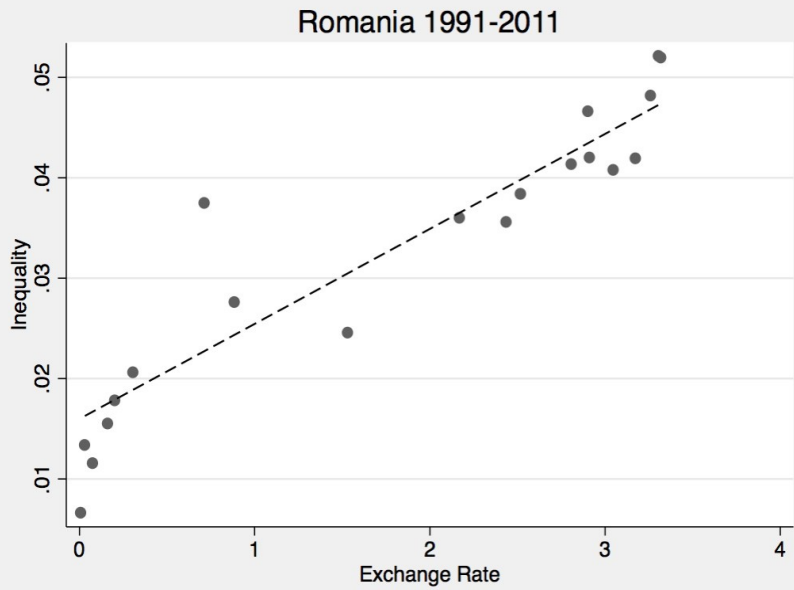
Mexico

Mexico

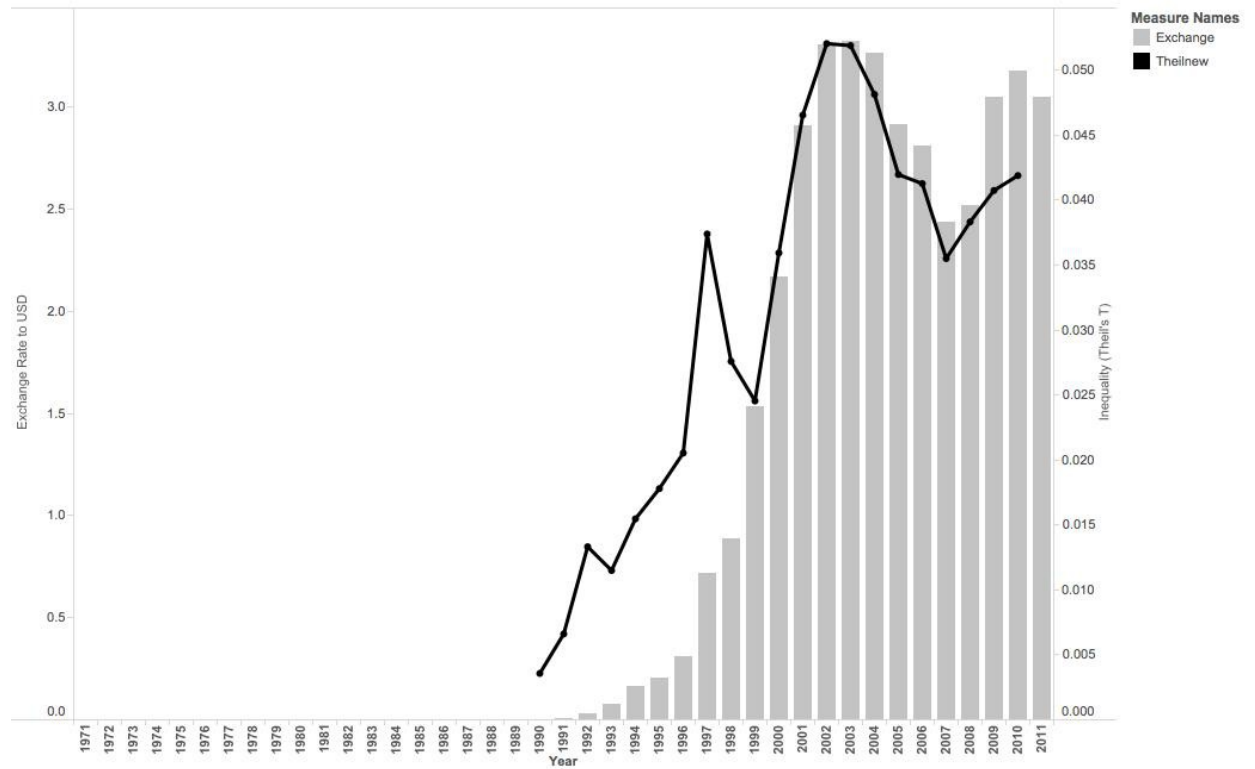


Exchange Rates and Industrial Wage Inequality

Romania

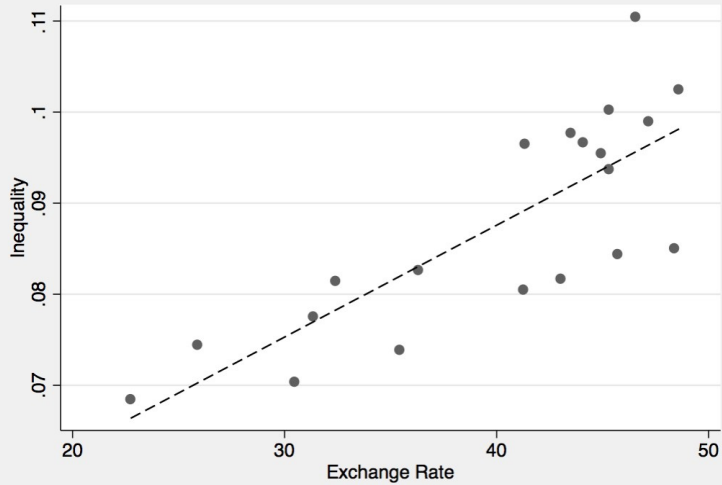


Romania



Exchange Rates and Industrial Wage Inequality

India 1991-2011



India

India

Charts and calculations
by Delfina Rossi

